



# COVID-19 vaccination registry in Spain



*MoH Spain.*



NITAG Collaboration Webinar, 17 November 2020

# Responsibilities regarding immunisation

Population Spain ≈47,026,000

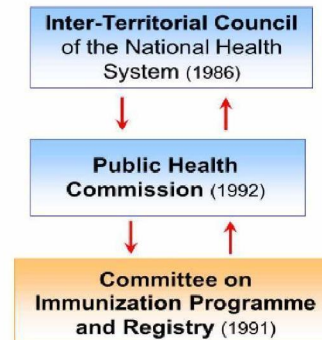
## Regions (since 1979-1985)

- Establishment and management of the immunisation programmes
- Procurement, distribution and administration of vaccines



## Interterritorial Council NHS (since 1986)

- Conditions and minimum requirements aiming to maintain the confluence, harmonization, coordination and cohesion between all the regional initiatives and immunisation recommendations



*ICNHS → Recommendations for Spain*

# IIS in Spain

Study in 2015, updated 2020

3

## GENERAL CHARACTERISTICS

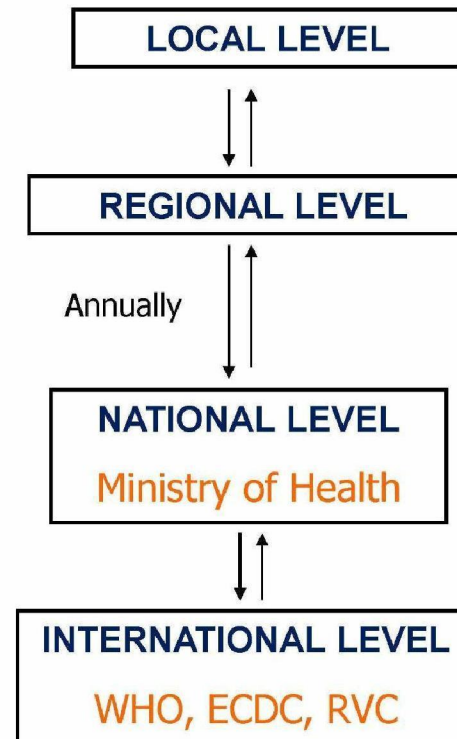
### □ 19 IIS/IR:

- Person unique identifier
- Record life-course vaccination data
- Record vaccination data of immigration
- Vaccine characteristics
- Date of administration

**HETEROGENEITY**

# Immunisation coverage. Algorithm for reporting

- ❑ **Annual coverage notification** since 1992 (IC agreement)
  - Common coverage indicators
    - Updated in 2017
- ❑ **Data collection and analysis**



# Why a COVID-19 registry?

5

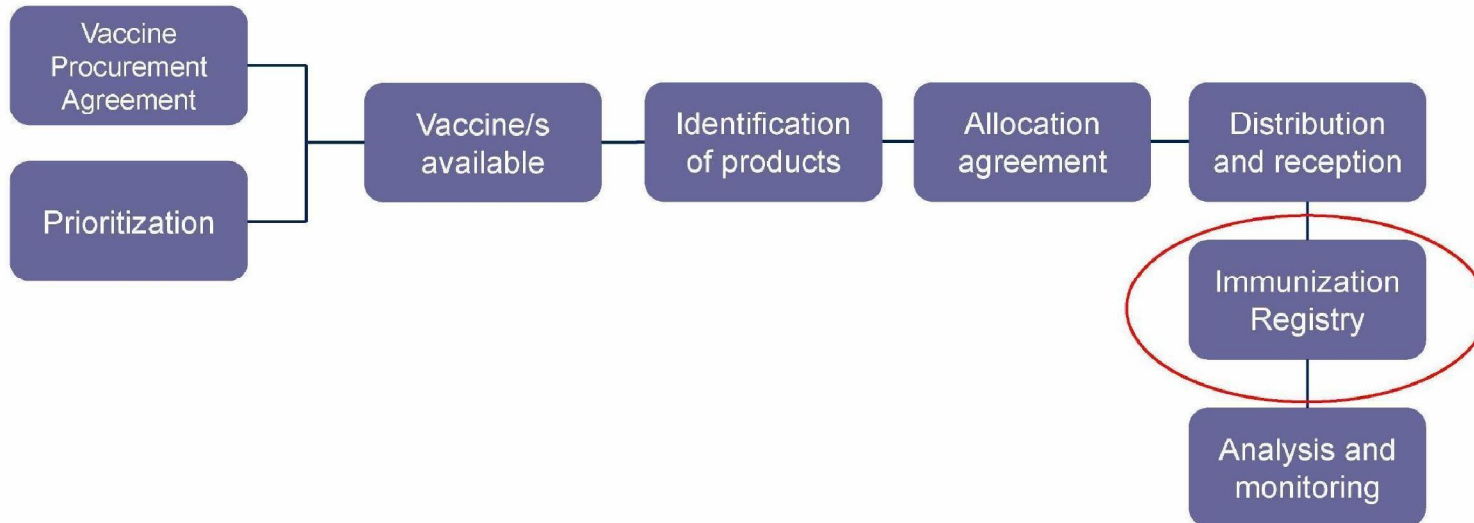
- European Commission – Advance Purchase Agreements
- MoH:
  - Procurement of COVID-19 vaccines
  - NITAG prioritization → agreed allocation to Regions
- Development of a COVID-19 registry of the NHS:
  - Real time monitoring: distribution and administration
  - Opportunity to drive improvement of regional IIS/registries
  - Automated analysis and information (MoH and regions)

# COVID-19 vaccination registry

6

- WG functionals - IT (MoH and Regions/Cities)
- **Objective:**
  - ▣ To develop a COVID-19 registry of the NHS, built on best practices from the Regions and previous joint experiences
- **Characteristics:**
  - Agile response to all those who are part of the NHS
  - Rapid development, expected by end November 2020
  - Adaptive capacity to be able to incorporate future changes
  - Technical, syntactic and semantic interoperability
  - Compliance with an agreed Clinical Information Model

## COVID-19 vaccination Information System flow



# COVID-19 vaccination registry

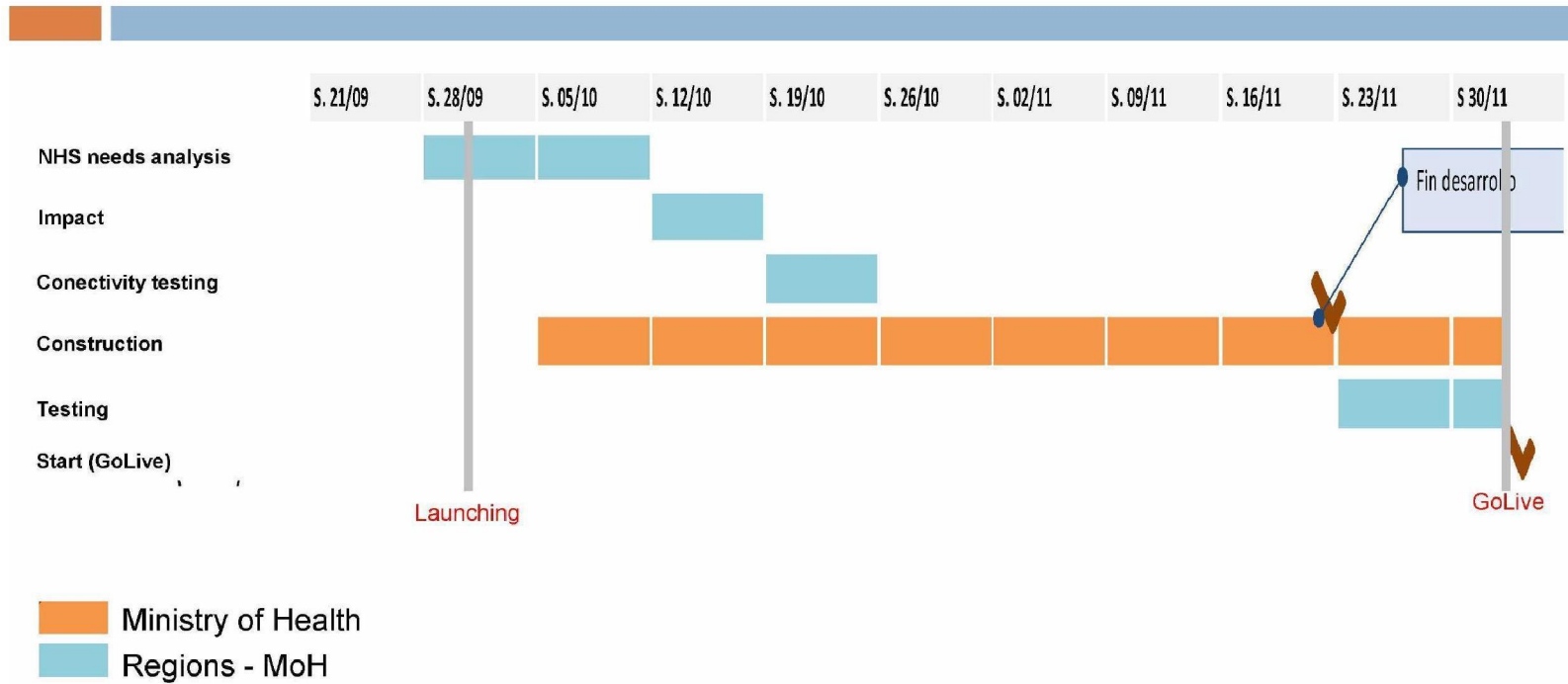


Data on COVID-19 vaccination can be uploaded daily from regional registries in Excel or CSV formats

The .xlsx or .csv files will be uploaded daily through **SQL Service Integration Services** in a central repository of the informational module. This information will be **pseudonymize** in the repository itself

The Central repository can be updated daily with the exploitation model defined in **Power BI**. Reports in special formats pdf, ppt can be generated in **SQL Server Reporting Server**

# COVID-19 vaccination registry – Project timeline



# COVID-19 vaccination registry

10

## □ Variables:

- Unique identifier – pseudonymized at MoH level
- Date of birth
- Geographical area of residence
- Vaccine given, date of administration, and provider
- Reason for vaccination

## □ Functions:

- Vaccination uptake monitoring
- Coverage by population characteristics and region
- Information of refusal of vaccination
- Source data for research

# COVID-19 vaccination registry

11

- Next steps
  - ▣ Exploitation module
  - ▣ Distribution module



**Acknowledgements:**

- Colleagues at Area of Immunisation Programme
- IT department (MoH) and regional IT people
- Members of NITAG's WG- IIS
- Members of the Spain's NITAG

**Thank you!**